

CHAMPION TRAILER PARTS SUPPLY

1-800-229-6690

FAX: 1-800-359-8169 [ORDER FOR](#)
[56705 I-10 SERVICE RD SLIDELL, LA. 70](#)

FREE CATALOG
.PDF DOWNLOAD

FREE CATALOG
MAILED TO YOU

ALL **INTERNATIONAL** AND **CANADIAN** CATALOG
REQUESTS PLEASE DOWNLOAD [.PDF ONLINE](#)
[CATALOG!](#)

BUILD YOUR OWN UTILITY TRAILER WITH OUR UTILITY TRAILER PARTS KITS

[No Frame Steel]
YOU SUPPLY ALL FRAME STEEL

**** NOTE:** all measurements contained in the trailer drawings at this web site are intended to give you approximate layout dimensions. Due to variations in structural material sizes that you may use for the trailer frame, the measurements that you will use may vary slightly from those measurements contained in the drawings @ this web site. It is the responsibility of the user to determine if the information contained at this web site will be appropriate, and applicable to his trailer construction or repair project.

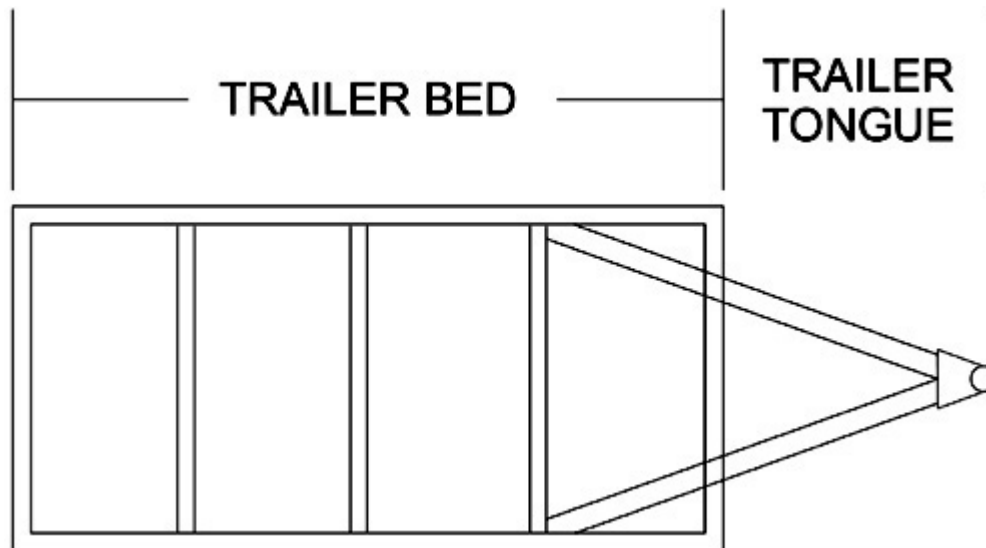
**** Note:** All technical information and specifications contained in Champion Trailers web site is intended to conform to industry standard design principles. Champion Trailers is not responsible for typographical or drawing errors that may occur. Champion Trailers cannot control the user's application of the information contained at this site, and it is the responsibility of the user to determine if the information contained herein is appropriate, and applicable to his trailer.

**** All information** contained at www.championtrailers.com is copyrighted. It may be downloaded for your personal use, however it may not be reproduced for commercial purposes without written permission.

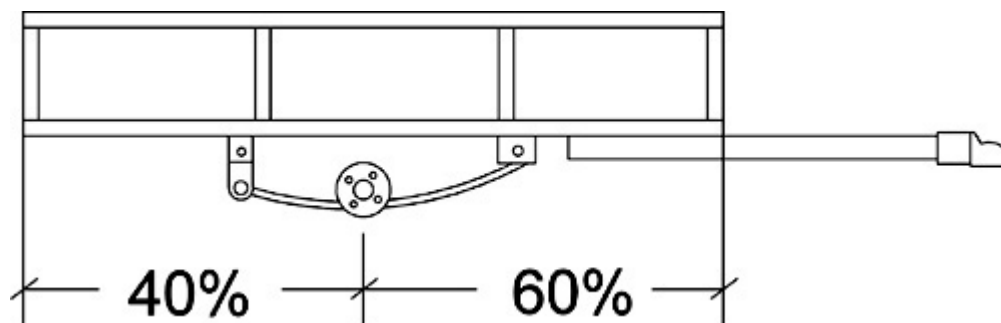
**** Note:** if it is your intention to build a trailer that has different framelength measurements from those in the drawings contained on this web page, proceed as follows: Calculate the axle center-line measurements based upon 60% of the frame of the trailer [rectangular bed] in front of the axle and 40% behind the axle.

Remember that these measurements are for the rectangular bed of your utility trailer, not including the tongue structural members.

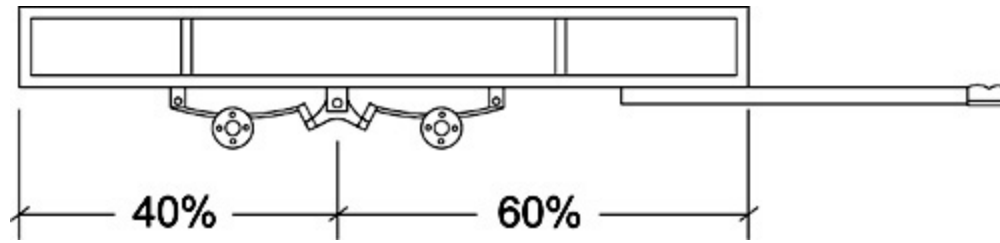
For example: a single axle trailer with a 10' long bed would have 6' of bed in front of the axle and 4' behind the axle.



On a single axle trailer, the axle is the point from which you will calculate your axle centerline measurements.



On a Tandem axle trailer The equalizer hanger is the point from which you will calculate the axle centerline measurements for tongue weight assessment.



PRODUCT INDEX

PLACE YOUR ORDER

TECHNICAL ASSISTANCE

CATALOG .PDF DOWNLOAD

CATALOG MAILED TO YOU

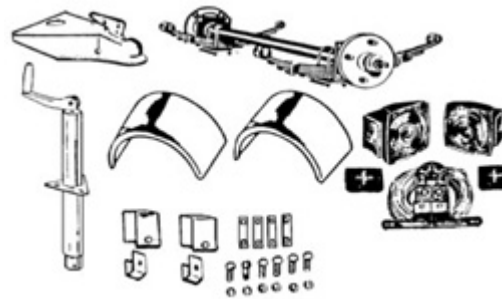
k k

SINGLE AXLE TRAILER PARTS KIT

• INCLUDES:

- 1 - 3500# PAINTED IDLER AXLE W/HUBS
- 1 - A-FRAME 2" COUPLER
- 2 - UNPAINTED 15" FENDERS
- 1 - LIGHT KIT
- 1 - AXLE U-BOLT KIT
- 2 - D/E SPRINGS 25 1/4"
- 1 - SINGLE AXLE SPRING HANGER KIT (PART # 4083)
- 1 - 2000# JACK (NO FOOT)

(NO FRAME - YOU SUPPLY ALL FRAME STEEL)



PART#	TRACK	HUB BOLT PATTERN	KIT PRICE	KIT WGT.
4068	73"	5 ON 4.5 - FORD	\$249.95	164#
4367	73"	5 ON 5 - CHEVY	\$249.95	164#
4069	89"	5 ON 4.5 - FORD	\$249.95	164#
4368	89"	5 ON 5 - CHEVY	\$249.95	164#

DESIGN AND MATERIAL LIST FOR 5' x 8' - 3500# SINGLE AXLE TRAILER USING A 73" TRACK AXLE

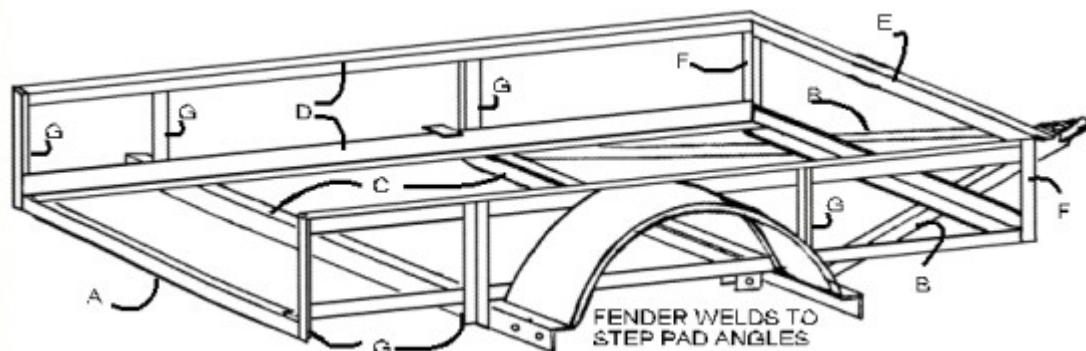
*** REFER TO ILLUSTRATION BELOW**

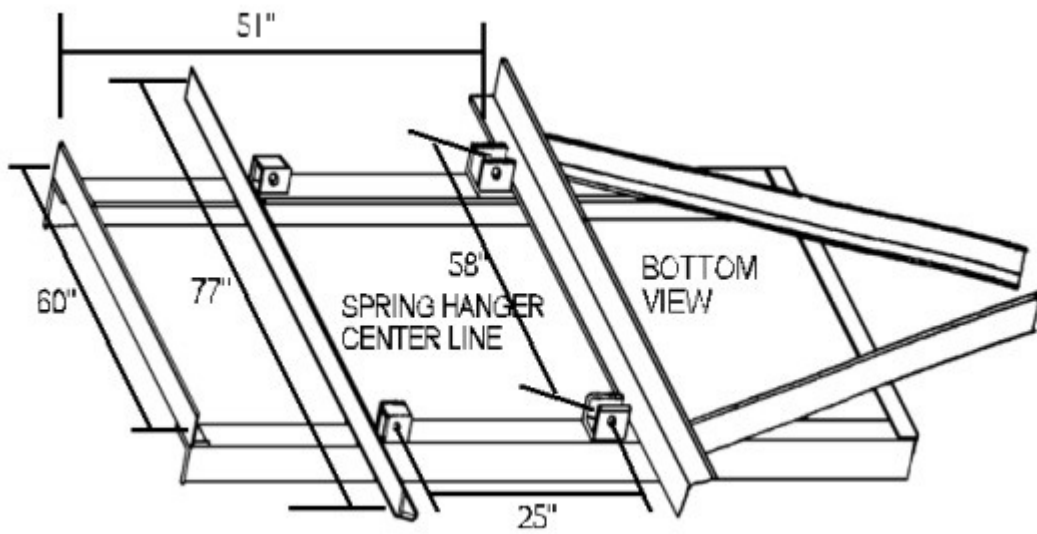
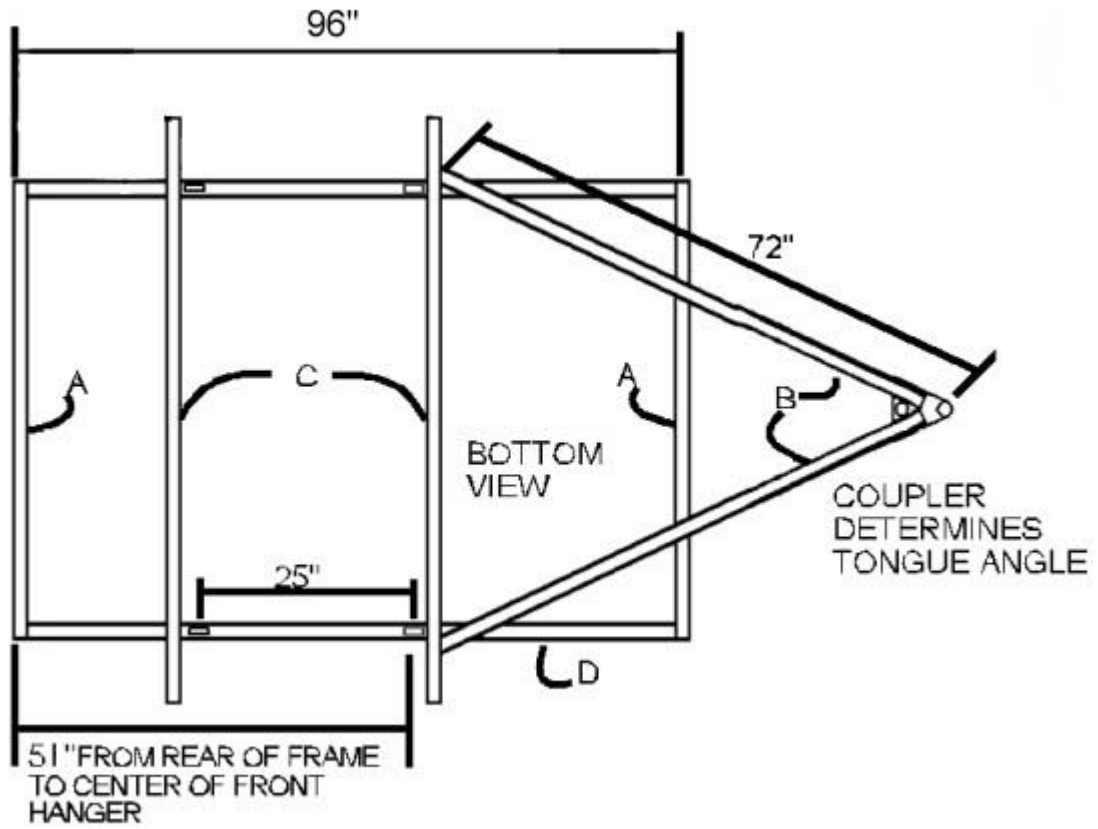
# OF PIECES	*ITEM	SIZE	LENGTH	*LOCATION
2	A	2 x 3 ANGLE	60"	FRAME AND REAR BOTTOM ANGLES
2	B	2 x 3 ANGLE	72"	TONGUE
2	C	2 x 3 ANGLE	77"	FENDER SUPPORT CROSS MEMBERS
4	D	2 x 3 ANGLE	96"	TOP AND BOTTOM MAIN FRAMES
1	E	2 x 3 ANGLE	64"	TOP FRONT RAIL
2	F	2 x 3 ANGLE	14"	FRONT VERTICAL SUPPORTS
6	G	2 x 3 ANGLE	17"	SIDE AND REAR VERTICAL SUPPORTS

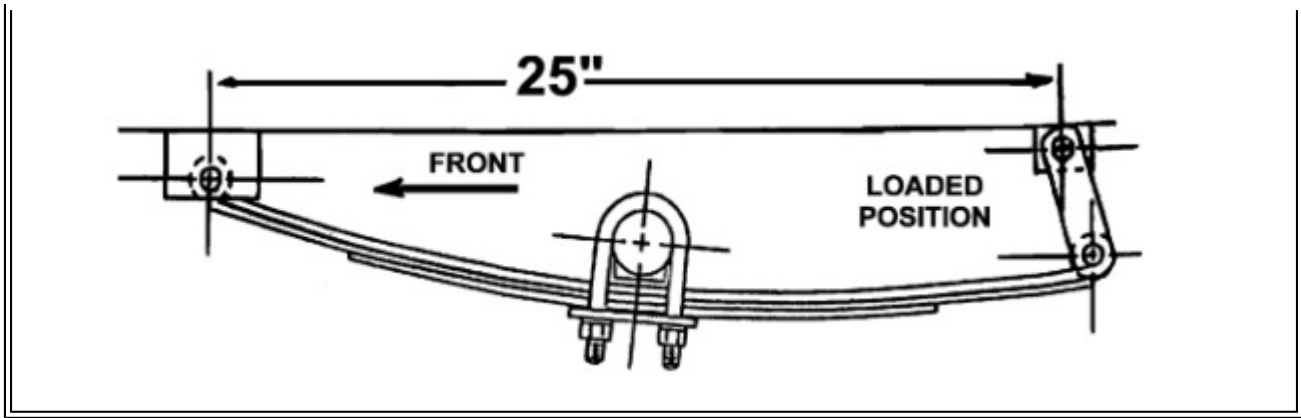
USE WITH TRAILER PARTS KIT # 4068 FOR 545 HUB BOLT PATTERN OR TRAILER PARTS KIT # 4367 FOR 550 CHEVY (5 ON 5") BOLT PATTERN

DESIGN INFORMATION CONTAINED IN THIS SITE IS NOT INTENDED TO PROVIDE TRAILER CAPACITY RECOMMENDATIONS. TYPE AND SIZE OF STRUCTURAL STEEL USED TO PRODUCE THE TRAILER FRAME MUST BE DETERMINED BY THE CUSTOMER TO FIT THE STRUCTURAL REQUIREMENTS OF HIS APPLIED LOAD. HOWEVER MAXIMUM KIT CAPACITY FOR A SINGLE AXLE IS 3500# GVWR (GROSS VECHICLE WEIGHT RATING)

*** REFER TO ILLUSTRATION BELOW**







PRODUCT INDEX

PLACE YOUR ORDER

TECHNICAL ASSISTANCE

CATALOG .PDF DOWNLOAD

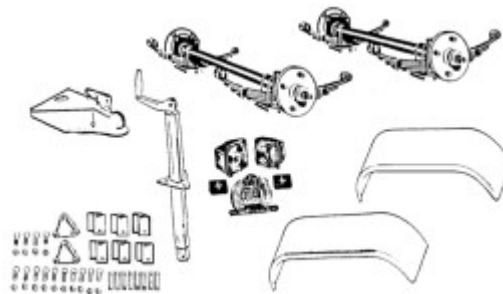
CATALOG MAILED TO YOU

TANDEM AXLE TRAILER PARTS KIT

• INCLUDES:

- 2- 3500# PAINTED IDLER AXLES WITH HUBS
- 1 - A-FRAME COUPLER 2"
- 2 - UNPAINTED 15" TANDEM FENDERS
- 1 - LIGHT KIT
- 4 - D/E SPRINGS 25 1/4"
- 1 - TANDEM SPRING HANGER KIT (PART #4084)
- 1 - 2000# JACK (NO FOOT)
- 2 - AXLE U-BOLT KITS

(NO FRAME - YOU SUPPLY ALL FRAME STEEL)



PART#	TRACK	HUB BOLT PATTERN	KIT PRICE	KIT WGT.
4070	89"	5 ON 4.5 - FORD	\$399.95	296#
4369	89"	5 ON 5 - CHEVY	\$399.95	296#
4065	95"	5 on 4.5" FORD	\$399.95	298#
4066	95"	5 ON 5" CHEVY	\$399.95	298

**BASIC TRAILER DESIGN FOR
7000# MAXIMUM CAPACITY
TANDEM TRAILER - BED SIZE 6' 4" x 16'**

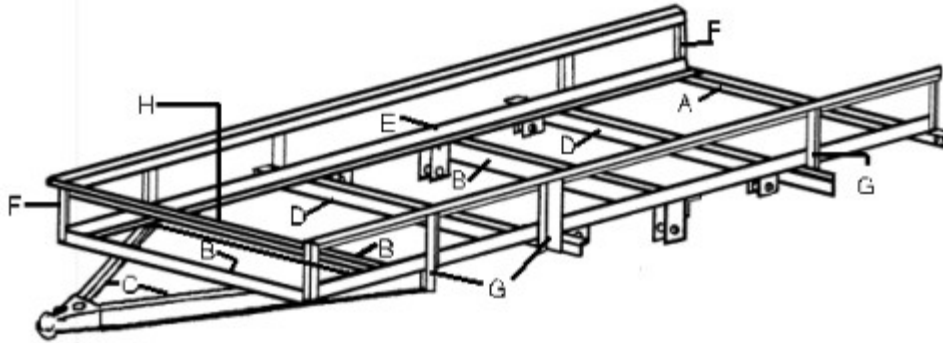
*** REFER TO ILLUSTRATION BELOW**

# OF PIECES	*ITEM	SIZE	LENGTH	*LOCATION
1	A	2 x 3 ANGLE OR 3 x 4 ANGLE	84"	REAR CROSS MEMBER
3	B	2 x 3 ANGLE	76"	MIDDLE & FRONT BOTTOM CROSS MEMBERS
2	C	3 x 4 ANGLE	81"	TONGUE
2	D	2 x 3 ANGLE	93"	FENDER STEP CROSS MEMBERS
2	E	2 x 3 ANGLE OR 3 x 4 ANGLE	192"	BOTTM MAIN FRAMES
4	F	2 x 3 ANGLE	15" OR LONGER	FRONT AND REAR VERTICAL SUPPORTS
6	G	2 x 3 ANGLE	18" OR LONGER	FENDER STEP VERTICAL SUPPORTS
1	H	2 x 3 ANGLE	80"	TOP FRONT CROSS RAIL
2	I	2 x 3 ANGLE	192"	TOP SIDE RAILS

**PART # 4078 - TO ADD ELECTRIC BRAKES - ADD \$136.00 PER AXLE TO KIT
PRICE PART # 6119 - UPGRADE TO SPINDLE - LUBE AXLE - \$25.00 PER AXLE**

**DESIGN INFORMATION CONTAINED IN THIS SITE IS NOT INTENDED TO PROVIDE
TRAILER CAPACITY RECOMMENDATIONS. TYPE AND SIZE OF STRUCTURAL
STEEL USED TO PRODUCE THE TRAILER FRAME MUST BE DETERMINED BY
THE CUSTOMER TO FIT THE STRUCTURAL REQUIREMENTS OF HIS APPLIED
LOAD. THIS KIT CONTAINS 2 - 3500# AXLES WITH A 7000# TOTAL AXLE
CAPACITY, HOWEVER THE 2" A-FRAME COUPLER IS RATED AT 5000#. IT
THEREFORE RECOMMENDED THAT YOU LIMIT YOUR GVWR (GROSS VEHICLE
WEIGHT RATING) OF THE TRAILER TO 5000#.**

*** REFER TO ILLUSTRATION BELOW**



IF YOU WISH TO CHANGE THE LENGTH OF YOUR TRAILER BED, CALCULATE THE AXLE CENTER OF GRAVITY POINT BASED ON 60% IN FRONT OF (COG) AND 40% TO THE REAR OF (COG). EXAMPLE: SINGLE AXLE TRAILER WITH A 10' LONG BED WOULD HAVE THE CENTER OF THE AXLE 6' FROM THE FRONT AND 4' FROM THE REAR OF THE BED.

[BACK TO TOP OF PAGE](#)

[PRODUCT INDEX](#) | [TECHNICAL SUPPORT](#) | [SHIPPING INFORMATION](#)

[HOW TO PLACE YOUR ORDER](#) | [.PDF CATALOG](#) | [MAILED CATALOG](#)



All Contents © 1996 - 2006 CHAMPION TRAILERS®

All articles and all technical and specification information contained at this Champion Trailers site is copyrighted. It may be downloaded for your personal use. However, it may not be reproduced for commercial purposes.

DISCLAIMER: All technical information and specifications contained at this site are intended to conform with industry standard engineering principals and technical information sources. **CHAMPION TRAILERS®** cannot control the users application of the information contained herein and is not responsible for users application of such information. It is the **responsibility of the user** to determine the applicability of all parts and information as it relates to their system. Champion Trailers knowledgeable sales staff may assist you in attempting to determine the correct part items for your repair project, however the customer is fully responsible for the final determination of applicable part numbers ordered. If incorrect part items are ordered, and need to be returned, the customer is responsible for all return shipping costs. If returned items are damaged they will not be allowed for credit.

Previous Revision: 05/24/2002

Last Revision: 09/29/2004

Send website comments to webmaster@championtrailers.com